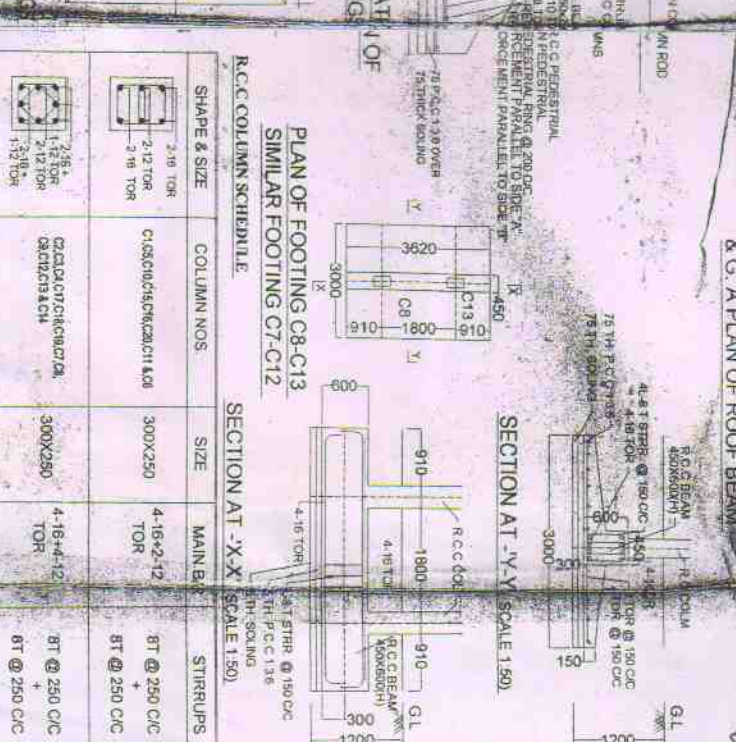
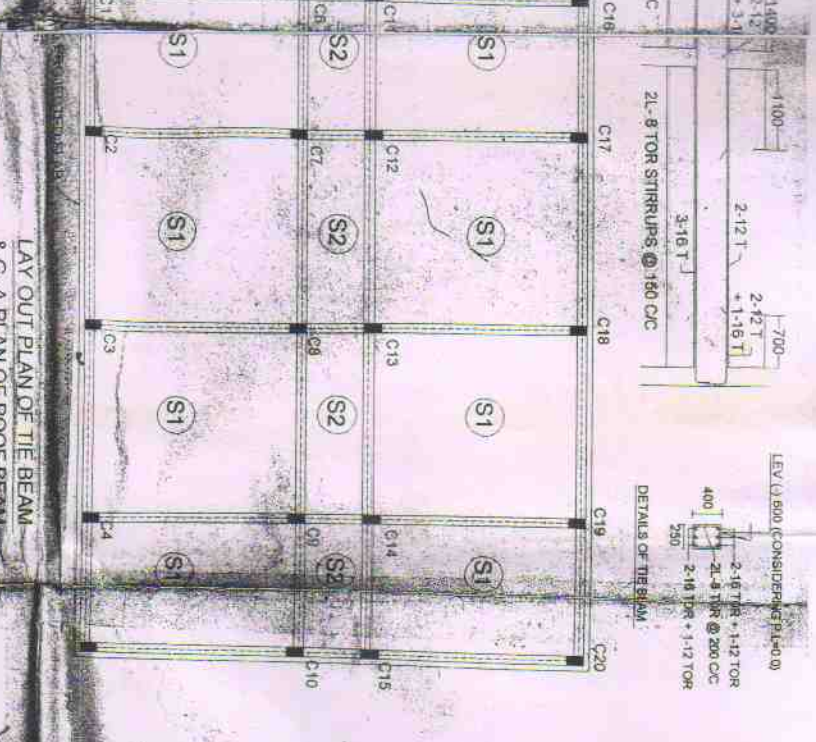
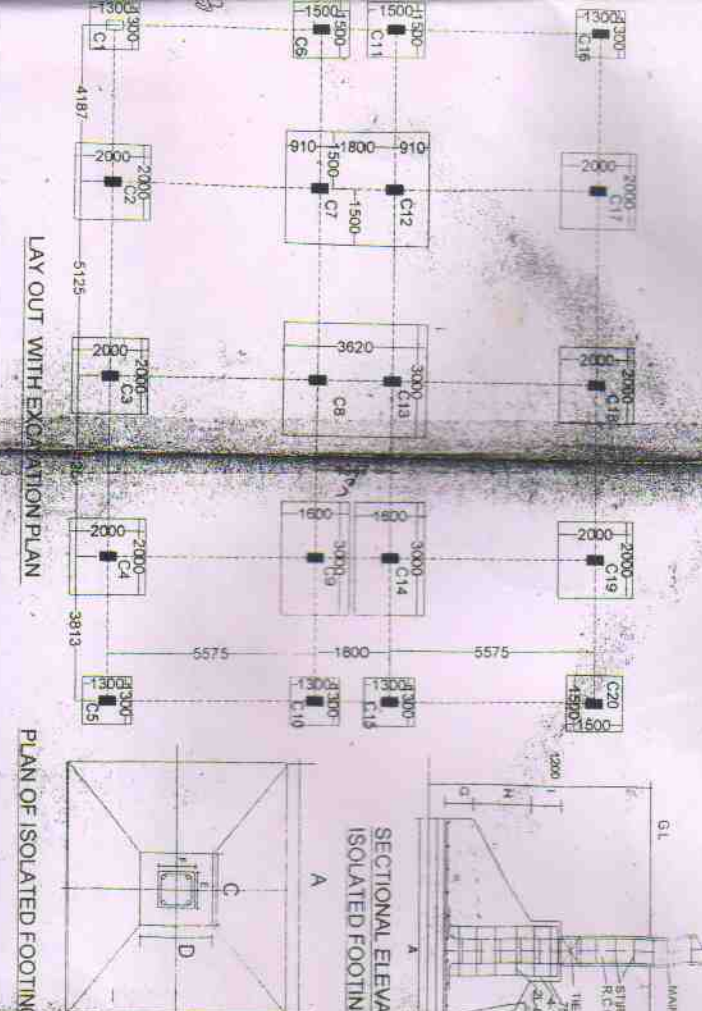


SCHEDULE OF ISOLATED FOOTING OF COLUMN

COLUMN NO	A	B	C	D	E	F	G	H	I
C1	2000	2000	2000	2000	2000	2000	2000	2000	2000
C2	2000	2000	2000	2000	2000	2000	2000	2000	2000
C3	2000	2000	2000	2000	2000	2000	2000	2000	2000
C4	2000	2000	2000	2000	2000	2000	2000	2000	2000
C5	2000	2000	2000	2000	2000	2000	2000	2000	2000
C6	2000	2000	2000	2000	2000	2000	2000	2000	2000
C7	2000	2000	2000	2000	2000	2000	2000	2000	2000
C8	2000	2000	2000	2000	2000	2000	2000	2000	2000
C9	2000	2000	2000	2000	2000	2000	2000	2000	2000
C10	2000	2000	2000	2000	2000	2000	2000	2000	2000
C11	2000	2000	2000	2000	2000	2000	2000	2000	2000
C12	2000	2000	2000	2000	2000	2000	2000	2000	2000
C13	2000	2000	2000	2000	2000	2000	2000	2000	2000
C14	2000	2000	2000	2000	2000	2000	2000	2000	2000
C15	2000	2000	2000	2000	2000	2000	2000	2000	2000
C16	2000	2000	2000	2000	2000	2000	2000	2000	2000
C17	2000	2000	2000	2000	2000	2000	2000	2000	2000
C18	2000	2000	2000	2000	2000	2000	2000	2000	2000
C19	2000	2000	2000	2000	2000	2000	2000	2000	2000
C20	2000	2000	2000	2000	2000	2000	2000	2000	2000



SLAB SCHEDULE:

MAIN REINFORCEMENT AT T @ 180 C/C
EXTRA TOP 8 T @ 300 C/C OVER ALL THE SUPPORTS
SLAB THICKNESS a) FOR S1= 110 mm
b) FOR S2= 150 mm
c) FOR S3= 150 mm
d) AT INTERMEDIATE SUPPORT = 0.3Xl_o (WHERE L_o = CLEAR SPAN)

AREA STATEMENT
PROP GR FLOOR AREA :- 246.050 SQM

TITLE STRUCTURAL DETAILS.

NOTES:
External walls are 230 thick & Internal walls 125 thick unless noted otherwise. All draughting 450
All dimensions are in millimetre

PROPOSED ONE STORED BUILDING FOR KATWA GOVT PR. TEACHERS TRAINING INSTITUTE PO KATWA, DIST. SUDHAMA

NEW BUILDING CONSTRUCTION OF GOVT. P.T.I. IN VARIOUS DIST. OF THIS STATE

NOTES:
ALL DIMENSIONS ARE IN MILLIMETRE
DONOT SCALE ONLY WRITTEN DIMENSIONS TO BE FOLLOWED
DISCREPANCY IF ANY SHOULD BROUGHT TO THE NOTICE OF THE DESIGNER PRIOR EXECUTION
CLEAR COVER FOR SLAB=10mm, COLUMN=40mm, FOOTING=50mm
ALL STRUCTURAL CONCRETE SHOULD BE M-30 GRADE
ALL REINFORCEMENT SHOULD BE Fe-415 GRADE

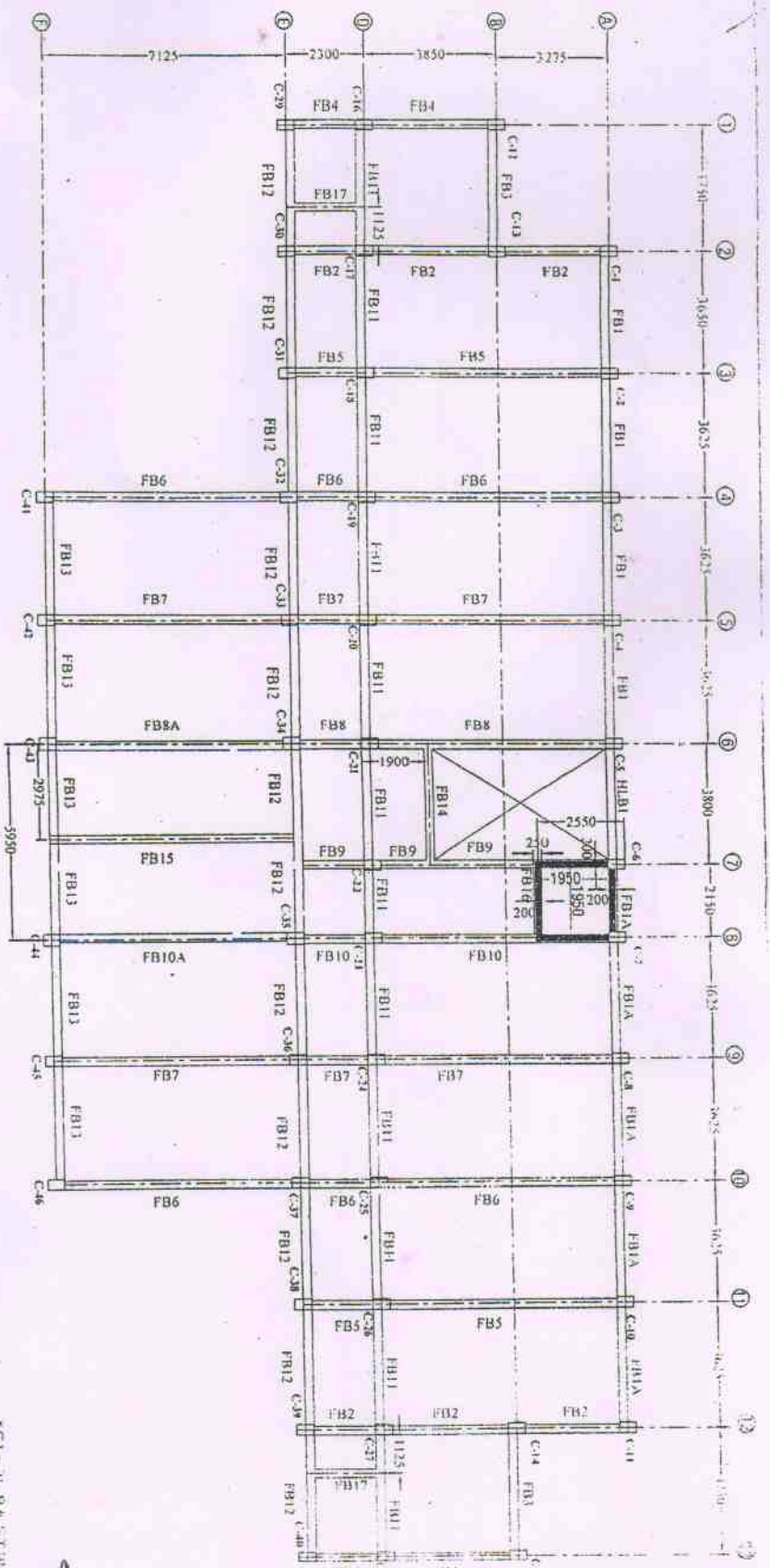
W.B.I.R.D.C.
5. COUNCIL HOUSE STREET
KOLKATA - 700 001

BASS CONSULTANTS
BL-106, SECTOR-II, SALT LAKE CITY
KOLKATA - 700 091

PREP BY: S.B. SCALE = 1:100
CHKD BY: R.D. Date: 06-09-10
APPD BY: N.D. (REG. NO. 85557/T)

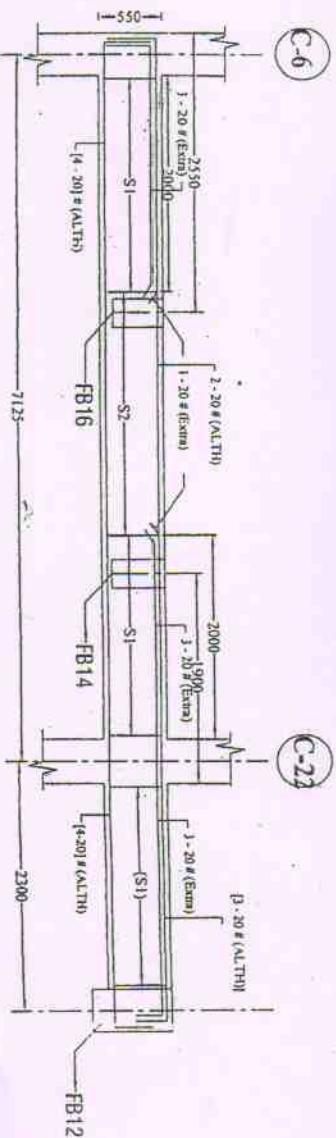
Samarendra Singha Roy





TYPICAL FLOOR BEAM PLAN

FLOOR SLAB THICKNESS = 130 mm



DETAILS OF FB-9 BEAM (SIZE 250X550)

*S1 = 2L-8# STIRRUPS @ 100 C/C
 **S2 = 2L-8# STIRRUPS @ 175 C/C

GOVT. OF WESTBENGAL SOCIAL SECTOR PUBLIC WORKS DIRECTORATE	
PROPOSED TWO STORED BUILDING FOR UPGRADEMENT OF P.T.I.TO B.L.I.E AT KATWA, DISTRICT - BURDWAN (WITH PROVISION OF FOUR STORED FOUNDATION)	
SCALE: 1:50, 1:100	TYPICAL LAYOUT PLAN AND STRUCTURAL DETAILS OF FLOOR BEAMS & SLAB
(S. K. INDU) ASST. ENGINEER EDUCATION UNIT	(A. GOSWAMI) EXECUTIVE ENGINEER EDUCATION UNIT
DATE:	DRAWING NO.: EDN29/18/11/2014 (SHEET 104)

Samsendra Singla Roy

